

# REFERENCES

## FJORD CROSSING WITH A LENGTH OF 1,240 M

Flensburg, Germany  
Rehabilitation of inverted siphon  
DN 300 PE 80 PN 10  
Operating pressure: 10 bar  
Total length: 1,240 m  
Installed in one section  
  
Primus Line® system: DN 250 PN 15



## PRESSURE UPGRADE ON AN EXISTING PVC PIPE CLASS 9 TO 16 BAR

Lismore, Australia  
DN 225 potable water main  
Total length: 460 m  
Multiple bends of up to 15°  
Installed in two sections with 170 m and 290 m  
  
Primus Line® system: DN 203 PN 35



## ASBESTOS CEMENT WATER MAIN REHABILITATION, 10 KM

Reocín, Spain  
Operating pressure: 7 bar  
Total length: 10,345 m  
Installed in 20 sections  
  
Primus Line® system:  
DN 250 PN 15 and DN 200 PN 18



## REHABILITATION OF A PVC WATER MAIN THROUGH EXISTING MANHOLES

Sorum, Norway  
Potable water pipe DN 150  
Operating pressure: 10 bar  
Total length: 165 m  
One horizontal bend of 22°  
  
Primus Line® system: DN 150 PN 25



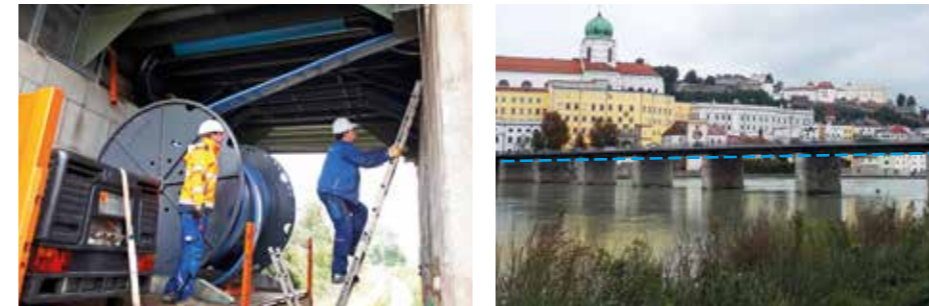
## ASBESTOS CEMENT WATER MAIN, 1.5 KM IN 53 HOURS

Izmir, Turkey  
DN 500 potable water main  
Operating pressure: 10 bar  
Total length: 1,500 m  
Installed in two sections with 600 m and 900 m  
  
Primus Line® system: DN 500 PN 16



## RENEWAL OF A STEEL WATER MAIN ACCOMMODATING DILATATION

Passau, Germany  
Preventive maintenance of a DN 400 PN 16 steel water main installed in a bridge  
Operating pressure: 6 bar  
Total length: 210 m  
  
Primus Line® system: DN 400 PN 18



## CRITICAL RAILWAY CROSSING WITH FOUR 45° BENDS

Penshurst, Australia  
Rehabilitation of a cement lined cast iron pipe DN 225 and DN 300  
Operating pressure: 10 bar  
Total length: DN 200: 47 m, DN 300: 77 m  
  
Primus Line® system:  
DN 200 PN 40, DN 300 PN 25



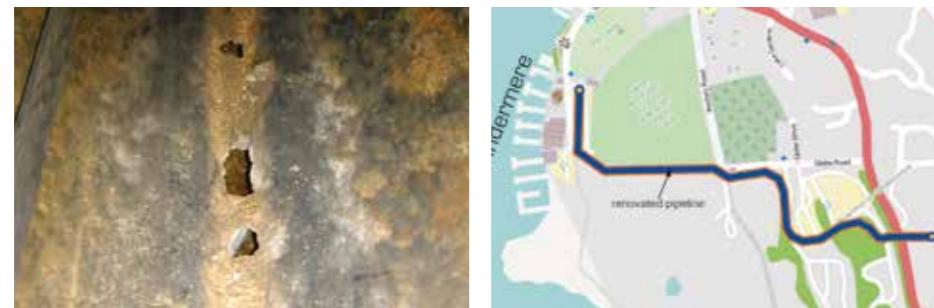
## HIGH PRESSURE WATER MAIN WITH 43.5 BAR OPERATING PRESSURE

Piemont, Italy  
Renovation of a DN 250 potable water steel pipeline  
Total length: 750 m  
  
Primus Line® system: DN 250 PN 56



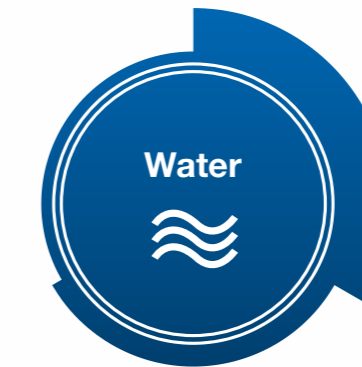
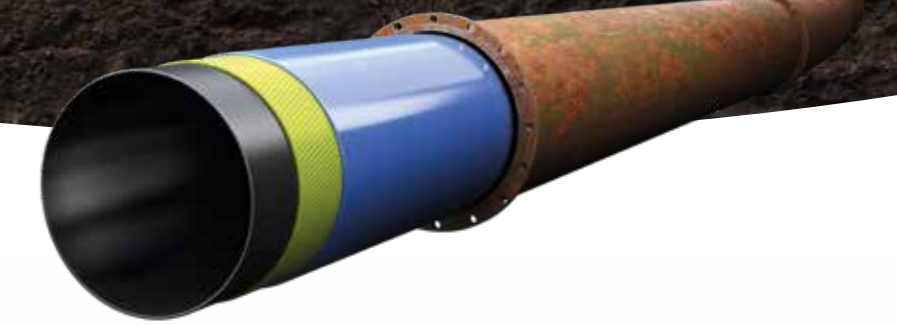
## CORRODED SEWER RISING MAIN WITH MULTIPLE 45° BENDS

Lake Windermere, United Kingdom  
Ductile iron DN 300 sewer rising main  
Operating pressure: 2 bar  
Total length: 771 m  
Installed in one section  
  
Primus Line® system: DN 300 PN 12



# PRIMUS LINE

The prime solution for pipes.



**Primus Line® – Flexible technology for the trenchless rehabilitation of pressure pipes**

- ✓ Potable water
- ✓ Firefighting water
- ✓ Industrial water
- ✓ Sea water
- ✓ Waste water



**PRIMUS LINE**  
The prime solution for pipes.



Rädlinger primus line GmbH  
Kammerdorfer Straße 16  
93413 Cham · Germany

Phone: +49 9971 4003 - 100  
Fax: +49 9971 4003 - 123

primusline@raedlinger.com  
www.primusline.com

© Rädlinger primus line GmbH, 02/2018. This document cannot be used to derive any legally binding assurance or warranty for certain properties of the product or the suitability of the product for a specific application.

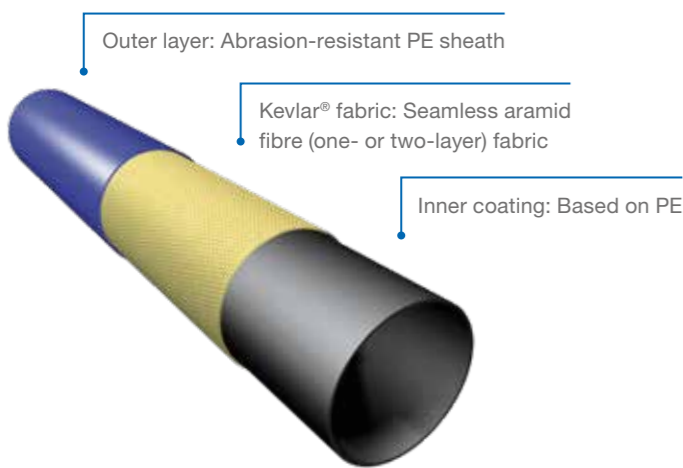
Designed,  
developed and  
made in Germany





# PRIMUS LINE® WATER

## FEATURES



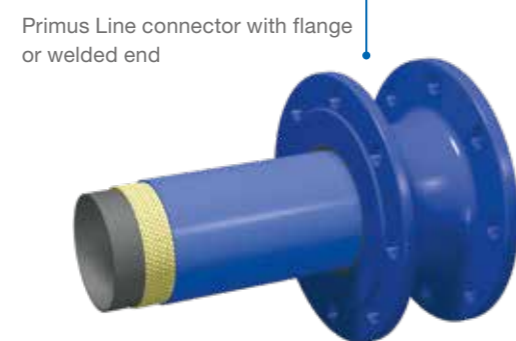
## APPLICATION

### Pipeline rehabilitation made easy

Primus Line® is an innovative technology for the trenchless rehabilitation of pressure pipelines for different media such as water, gas and oil. The process is based on a flexible high-pressure pipe and a connection technology developed specifically for this system.

Primus Line® is suitable for the transportation of various liquids in the field of water and holds drinking water approvals in numerous countries.

The ideal flow characteristics caused by an extremely smooth inner coating and the optimised systems for high-, medium- and low-pressure requirements make Primus Line® an economical solution for the rehabilitation of ageing pipelines. Thus, water authorities and network operators benefit from reliable operation and a sustainable investment in their fixed assets.



Factory-produced product



## MOST SUITED ENVIRONMENTS

Pipelines often run through environments that are hard to access. Obstacles to an easy and fast rehabilitation of ageing pipes can be of geographical, economical, architectural or environmental nature.

Primus Line® easily overcomes those obstacles and is uniquely suited for projects in the following areas:

Diameter between DN 150 and DN 500

HOST PIPE

Small pits

Up to 10 m/min

Independent of host pipe

Several bends up to 45°

Pressure rates with up to 82 bar

No curing, steaming or adhesion process

HOST PIPE

Liner winched into existing host pipe

# PRIMUS LINE

The prime solution for pipes.

### ✓ Save time and money!

- Installation speeds of up to 10 metres per minute
- Up to 2,500 metres per pull
- Quick re-commissioning for minimal time of service interruption
- Low pre-investment for installers

### ✓ Simplify the engineering process!

- Installation through multiple bends of up to 45°
- Withstands thermal expansion of the host pipe and seismic movement
- Fully flexible seamlessly woven Kevlar® fabric

### ✓ Protect the environment and the neighbourhood!

- Minor installation footprint
- Small pits and reduction of road work
- Reduced use of machinery
- Decreased impact on traffic
- Minimal disturbance of daily life around

### ✓ Increase your pressure rates!

- Burst pressure rates up to 206 bar
- Operating pressure up to 82 bar
- Independent of host pipe

### ✓ Extend the service life!

- 100% quality control during the manufacturing process and before shipping
- No curing, steaming or adhesion process
- Independent of weather conditions during installation
- 50+-year lifetime

Headquarters in Germany

Branch offices in the USA and in Australia

Installation Partners worldwide



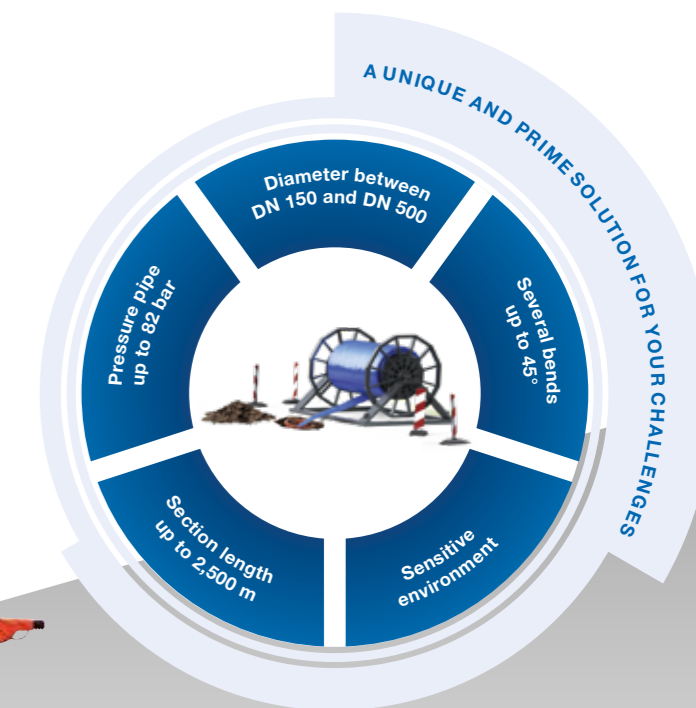
Global Primus Line activities

## APPLIED WORLDWIDE

### Rely on experience!

For more than 55 years, the Rädlinger Group with 1,800 employees has already been active in the construction industry. Also part of this strong group is Rädlinger primus line GmbH. With more than 15 years of experience in trenchless pipeline rehabilitation and projects in more than 40 countries, Primus Line® belongs to the leading technologies in the field of trenchless pressure pipe rehabilitation in the world.

Primus Line relies on Germany as production site. A global partner network and own branches in the USA and Australia grant a fast and uncomplicated project handling on site.



## SUITABILITY OF PRIMUS LINE®

Currently Primus Line® is more suitable to rehabilitate damaged pressure pipes between DN 150 and DN 500 in diameter with several bends and for installation sections between 300 metres and 2,500 metres in a sensitive or difficult environment quickly and reliably than any other existing system in the world.

Up to 2,500 metres in one step